

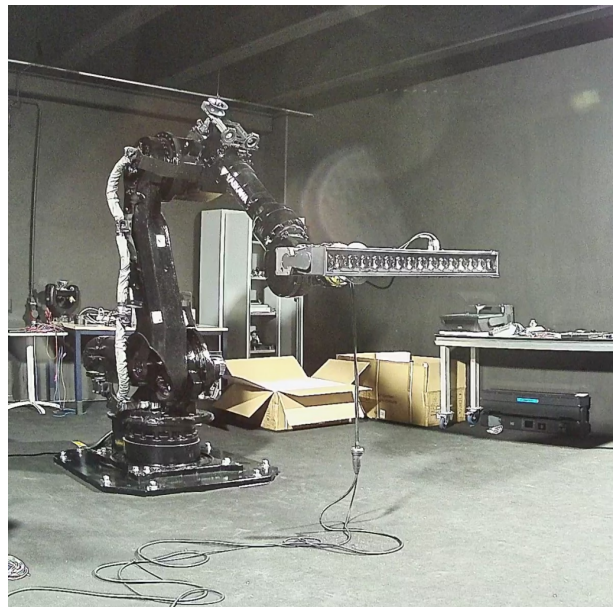


Wild Bar 16
CRI RGB Mode
Photometric Report

Report 2025-04-03-2

GLP German Light Products GmbH
GLP LightLab

CRI	75
Lamp	RGBL
Serial Number	2012800015
Measurement Date	2025-04-03 10:22
Analysis SW Version	3.0.0rc7





Contents

1	White Quality – RGB Wide	2
1.1	TM-30-15 Detail Plots	3
1.2	TLCI-2012 Results	5

1 White Quality – RGB Wide

Table 1: Summary for RGB Wide spectral measurement results and color metrics.

Metric	Value
CCT	6988 K
CCT D_{uv}	0.0020
CRI R_a	75
CRI R_g	-16
TLCI-2012	65
TM-30-15 R_f	120
TM-30-15 R_g	79
CIE 1931 x	0.306
CIE 1931 y	0.320
CIE 1960 u	0.196
CIE 1960 v	0.308

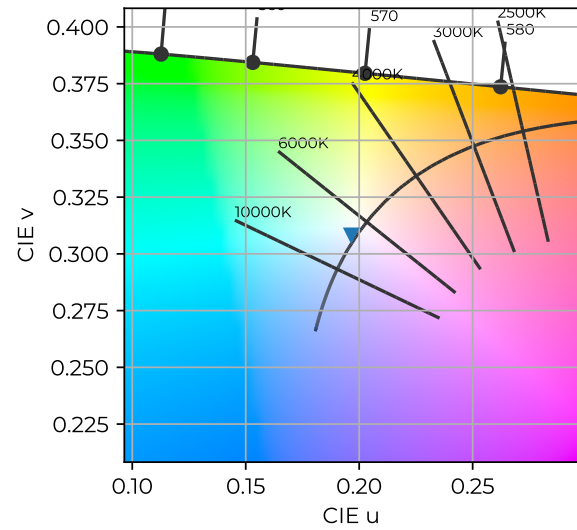


Figure 1: Color coordinates in CIE 1960 chromaticity diagram. RGB Wide

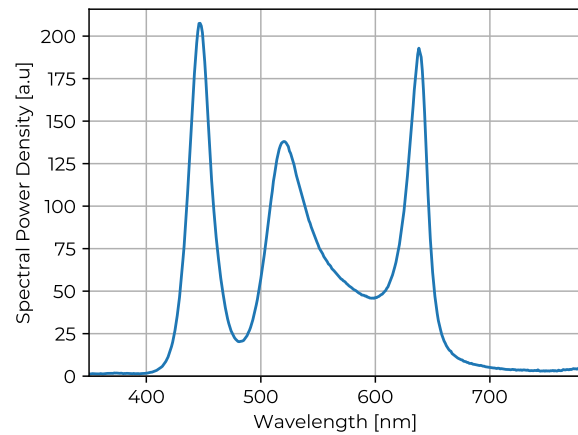
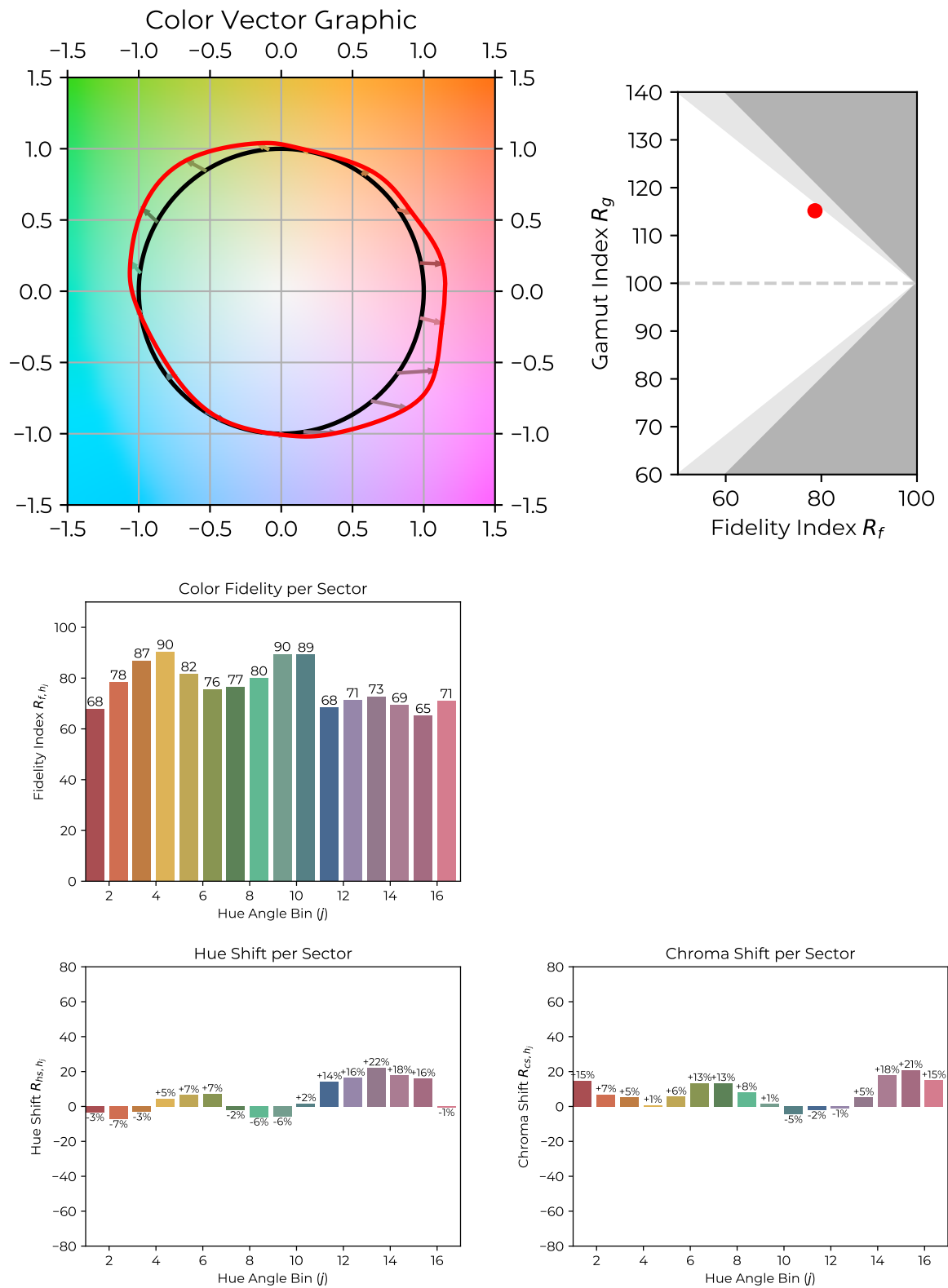
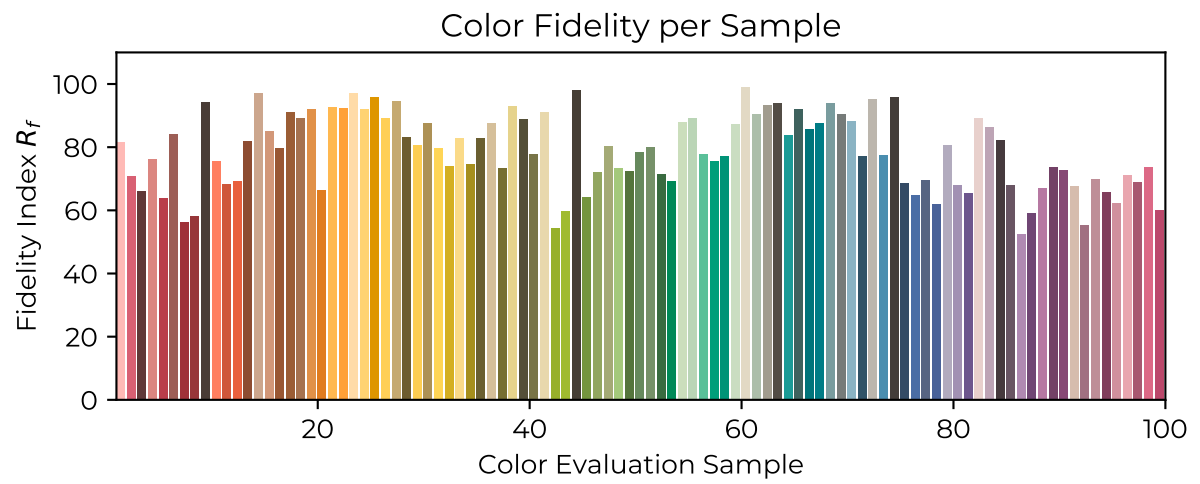


Figure 2: Measured Spectral Power Distribution of light source. RGB Wide

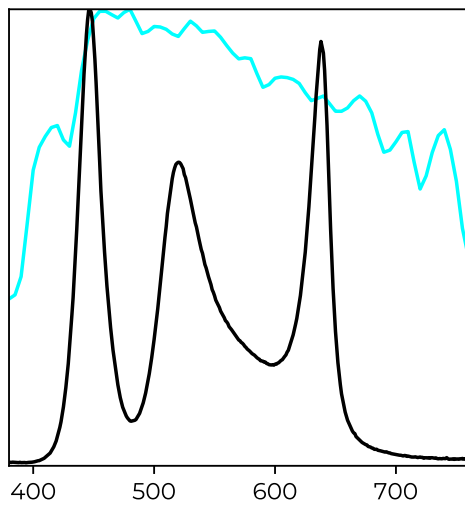
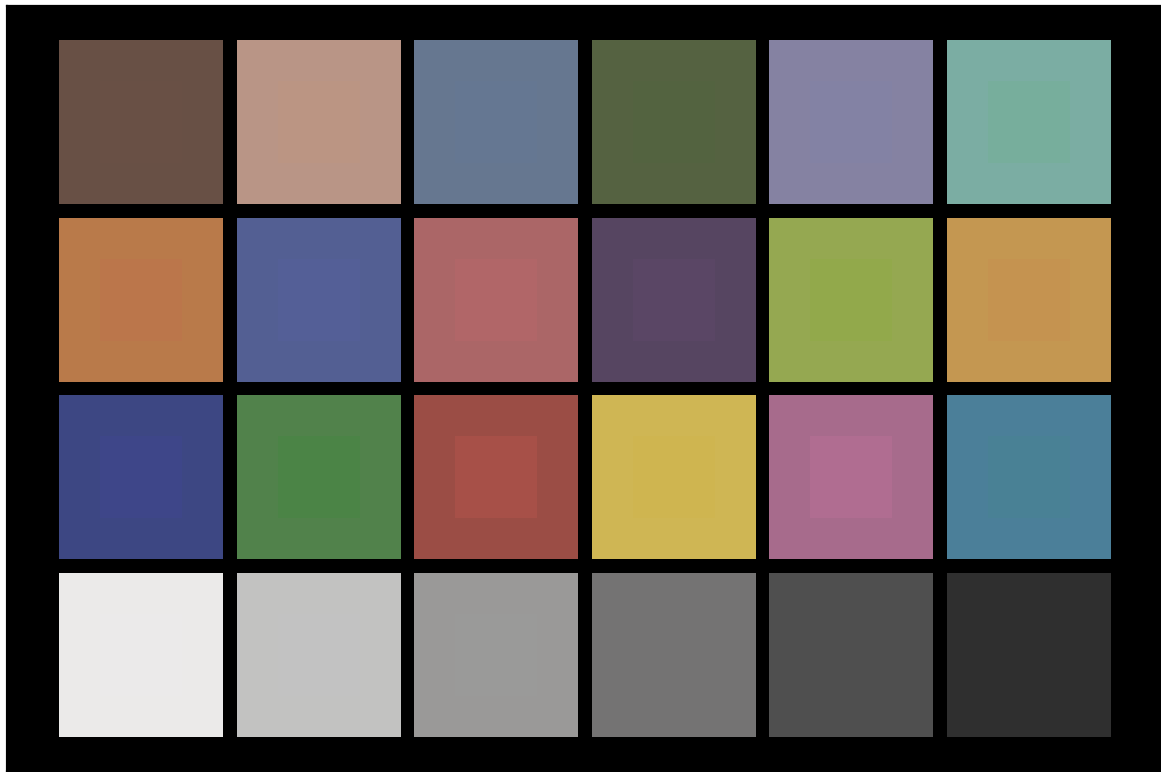
1.1 TM-30-15 Detail Plots





1.2 TLCI-2012 Results

Wild Bar 16 RGB Wide : CCT = D5932 – 1.8, TLCI = 65



Sector	Lightness	Chroma	Hue
R	4	4	4
R/Y	3	3	3
Y	0	0	0
Y/G	2	2	2
G	3	3	3
G/C	7	7	7
C	4	4	4
C/B	3	3	3
B	2	2	2
B/M	2	2	2
M	3	3	3
M/R	4	4	4